

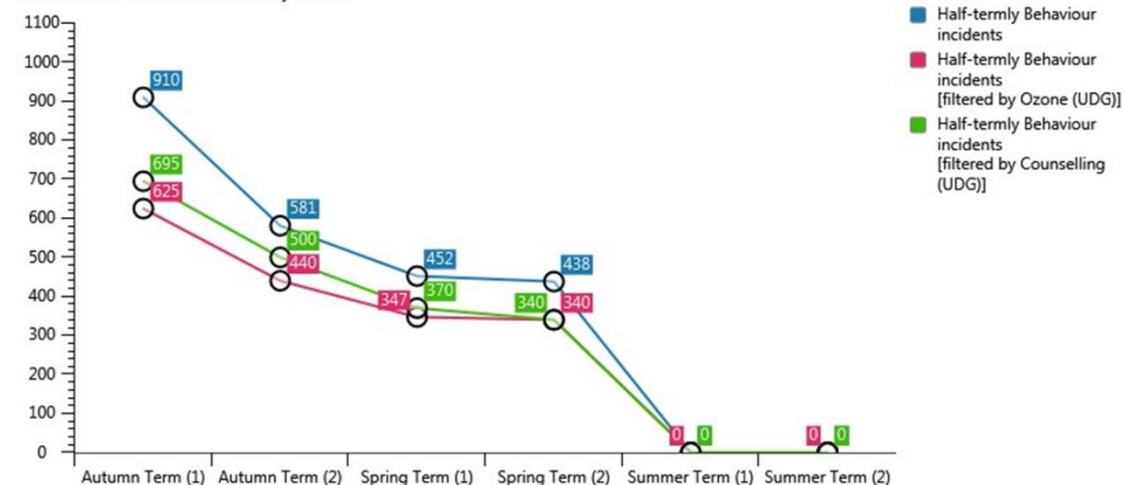
Pupil Premium 2016/17 – anticipated income	£51,921	Ongoing evaluation of expenditure:
Proposed expenditure:		
Barnardo's – counselling service (up to July 2016)	£5000	Pupils felt they have a safe and confidential place to seek emotional and mental health support. Pupils in crisis can be supported immediately – preventative behaviour for learning management.
ADHD Clinic/Provision	£4500	On-site specialist support for parents/carers and pupils with ADHD or suspected ADHD. The on-site clinic provides parents and carers with an accessible appointment option. School have also provided family support in terms of transport to these appointments to ensure that the pupils' medical needs are fully met.
Ozone therapy	£6700	Holistic therapeutic base offering pupils respite and play therapy. Pupil voice indicates that the service is well-received has a positive impact on pupil well-being. Ozone works in synergy with our counselling therapies by allowing pupils to rest, recover and return before accessing lessons.
Pupil Counsellor	£10,470	Pupil Counsellor from September 2016 delivering individual therapeutic counselling for those pupils identified as needing support. At half year, the in-house service at Penkford had delivered 260 sessions. Having a familiar and consistent face around school enables the counsellor to save time in the initial trust growing phase of counselling, meaning fewer sessions are needed to ensure value for money whilst providing the essential support needed in school.
Safer Schools Police Officer additionality x 2	£12,000	SSPOs fulfil an important role in school to support and guide pupils, not only to prevent the risk of harm, but to also help ensure they achieve their optimum life chances. SSPOs have delivered and contributed to assemblies to raise awareness at key times throughout the year (e.g. Halloween and Bonfire night). We brought in a second officer (PC Wendy) with a different skill set to complement our existing officer (PC Taylor) to give us term time full coverage in term 3 of 2015-16. PC Taylor retired September 2016. PC Lawson has since joined the school. In addition to on-site duties, SSPOs complete home visits as a key part of their preventative role in school.
Military Mentoring Programme (May - August)	£6000	Key cohorts of pupils (red flag) have responded well to our military mentoring programme which offers 1:1 sessions with a coaching approach. The number of pupils classed as our red flag cohort in term one reduced as pupils modified their behaviour and attitude following close mentoring and monitoring.
SEMH Clinic – Primus Psychology	£4500	Educational psychologist commissioned in to provide bespoke SEMH assessments and professional training for staff to bridge the gap of immediate support needed for our pupils in the area of mental health.
Home transport (removing barriers to learning) up to Jan 2016	£2481	Increased attendance figures for key pupils, improved parent and carer interaction with school liaison and a reduction in the number of persistent absentees.
Total committed expenditure:	£51,651	

Impact of Pupil Premium expenditure 2016-17:

In addition to the qualitative benefits of our pupil premium funded staffing additionality reported by pupils, the positive impact of having on-site therapeutic services is reflected in the behaviour data recorded by staff.

Pupils which have accessed the counselling service or Ozone since September have displayed a reduced number of negative behaviours in class and around site.

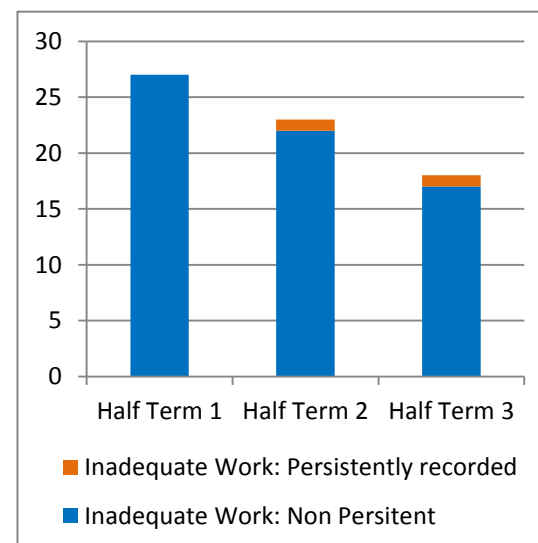
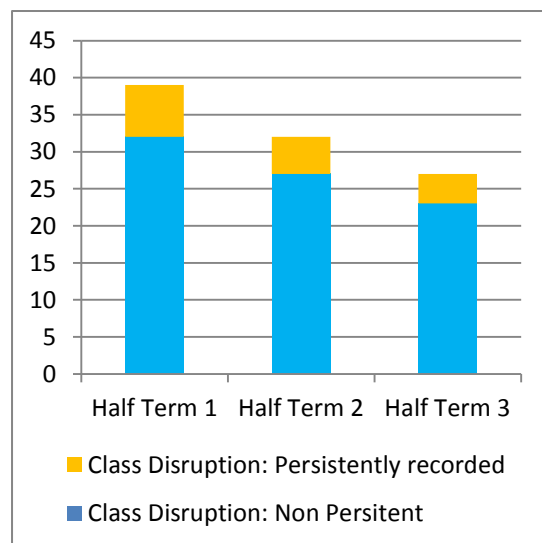
Behaviour incidents by Half Term
The count of students behaviour incidents by Half Term



The benefits of our intervention and support offer funded by pupil premium is also reflected in the school-wide attitude to learning of pupils:

- A reduction in low level disruption within class across the school since September.
- A reduction in the incidents of 'inadequate work' being reported since September.

Class Disruption & Inadequate Work



*Persistently recorded = greater than 1 incident/week on average